



CanaQuest
MEDICAL CORP

Corporate Presentation

Q2 2021



Forward Looking Statements

To the extent of statements made in this presentation contains forward looking statements and information that are based upon beliefs of, and information currently available to, the company's management as well as estimates and assumptions made by the company's management. When used in this presentation the words "anticipate," "believe," "expect," "future," "intend," "plan" or the negative of these terms and similar expressions as they relate to the company or the company's management identify forward looking statements.

Such statements reflect the current view of the company with respect to future events and are subject to risks, uncertainties, assumptions and other factors relating to the company's industry, its operations and results of operations and any businesses that may be acquired by the company. Should one or more of these risks or uncertainties materialize, or should the underlying assumptions prove incorrect, actual results may differ significantly from those anticipated, believed, estimated, expected, intended or planned.

We caution that the foregoing list is not exhaustive of all possible factors, as other factors could adversely affect our results, performance or achievements. The reader is cautioned against undue reliance on these forward-looking statements. Although the company believes that the expectations reflected in the forward-looking statements are reasonable, the company cannot guarantee future results, levels of activity, performance or achievements. The inclusion of such forward looking statements should not be regarded as a representation by the Company or any person that the future events, plan or expectations contemplated by the Company will be achieved. Except as required by applicable law, including the securities laws of the United States and Canada, the company does not intend and assumes no obligation to update or revise any of the forward-looking statements if new information becomes available, as a result of future or for any other reason to conform these statements to actual results.



CanaQuest Medical Corp

LIFE SCIENCE/PHARMACEUTICAL COMPANY



VISION

To be a **global leader** in the formulation and development of health products from cannabis derivatives.



Problem | Minimal Science Behind “Medical” Cannabis Products

Today’s “medical” cannabis products take a **trial-and-error** approach to treating symptoms, rather than following a scientific method.

Medical Cannabis without science is just Recreational Marijuana

- ❑ - Anecdotal evidence - **doctors have no guidance in prescribing as medicine**
- ❑ - Various blends (no formulation) - **with variable concentrations and effectiveness**
- ❑ - Large edible doses with low efficacy (6% -10%) - **is toxic for digestive system, especially liver**

Solution | Scientifically developed “Medical” Cannabis Products

Mentanine® increases efficacy of Pharma Grade CBD 10x in the Brain for the treatment of Mental Health Ailments by interacting with the Central Nervous System “CNS”



Opportunities | Two Master Formulations – Pharmaceutical Focus

Pharmaceutical Full pharmaceutical (R_x) product with **FDA**-certified healthcare claims (FDA approval required):

Mentanine R_x – Treatment of Epilepsy

- ❑ Dravet syndrome
- ❑ Lennox Gastaut syndrome
- ❑ Tuberous Sclerosis Complex
- ❑ Rett syndrome



Mentabinol R_x

- ❑ Multiple Sclerosis (MS)
- ❑ Spasticity
- ❑ Arthritis

ADC BioMedical Corp Fully owned subsidiary, licensed by Health Canada for sale, import & export of Cannabis & Cannabinoid products for medical purposes (**near-term revenue**):

Mentanine[®] – Pharmaceutical Grade, Zero THC (Omega-3 + CBD formulation)

- ❑ Mental Health, Anxiety & Depression
- ❑ Pain Management
- ❑ Arthritis



Mentabinol[®] – Pharmaceutical Grade (THC + L-Theanine formulation)

- ❑ Mental Health, Anxiety & Depression
- ❑ PTSD, Schizophrenia
- ❑ Pain Management

Corporate Advantages

| What Sets Us Apart From The Competition



End-to-End Scientific Approach



Partnerships - Processing & Distribution

- ❑ **Western University, Dr. Steven Laviolette & 13 scientists – partners since 2017**
 - IP is 100% owned by CanaQuest without royalties
 - Two Master Formulations (Mentanine® & Mentabiol®) developed
 - Pre-clinical Trials completed – initiating Human Clinical Trials
 - Science published in the Journal of Neuroscience¹
- ❑ **Ontario Brain Institute** – Clinical Trial agreement in process - Epilepsy
- ❑ **McMaster University** – Pilot Study proposal in process - Anxiety
- ❑ **Guelph University** – Signed R & D program - Anxiety, Pain (Pets)
 - Support from the Government of Canada (MITACS) Grant
- ❑ **BioPharma Global** - Full-service agreement in place
 - Regulatory Affairs Consulting Team, comprised of globally recognized experts, including former US-FDA staff

- ❑ **PurCann Pharma and SiliCycle** - Signed agreement
 - Extensive experience and expertise in global pharmaceutical space
 - Regulatory and marketing expertise
 - Established distribution channels - Canada & Globally, 100+ countries
 - High production volume pharmaceutical infrastructure
- ❑ **Canadian Cannabis Clinics** – Patient referral agreements in place
 - Access to 100,000+ patients
 - Low-cost distribution channels
- ❑ **E-commerce** - (canaqueststore.com) – 99% complete
 - Technical, marketing and social media consultants selected

1 – <https://www.jneurosci.org/content/early/2020/11/24/JNEUROSCI.1050-20.2020>



Pharmaceutical Product

| Comparison with Similar, FDA Approved Product



Mentanine® Rx US\$650/100ml¹

Scientifically developed medicinal formula



CBD 22.2 mg /ml, with Omega-3 active ingredients, flavor w/o sweetener

10 TIMES MORE EFFICIENT MEDICATION - NO SIDE EFFECTS

- Scientific formula – allowing for lower dosage
- Minimum CBD dose via sublingual delivery
- 80% to 90% of CBD enters blood stream – by crossing the Blood Brain Barrier (BBB)
- OMEGA 3 supports endocannibal system

Concerns addressed:

- Does not damage the digestive system or cause liver toxicity

COMPANY NAME

CanaQuest Medical

POST-MONEY VALUATION AT LAST CAPITAL RAISE

US\$8.85 Million

1 – Proposed pricing, subject to change

2 – Dravet Syndrome, Lennox-Gastaut Syndrome and Tuberous Sclerosis Complex, Rett Syndrome in process



Epidiolex® Rx US\$1,300/100ml

FDA-approved for epilepsy²



CBD 100mg /ml, sesame as a carrier oil, sweetener & flavor

DELIVERY LIMINATION & – EXISTING SIDE EFFECTS

- No formula: relying 100% on CBD action
- Large dose by oral delivery, overloads the liver
- Only 10% of the formula enters the blood stream within hours

Health concerns:

- Sesame oil: may cause low blood pressure, in those with existing condition
- Sucralose: long-term health effects are unclear

COMPANY NAME

GW Pharmaceuticals

SYMBOL

GWPH

MARKET

NASDAQ

SHARE PRICE

US\$217.26

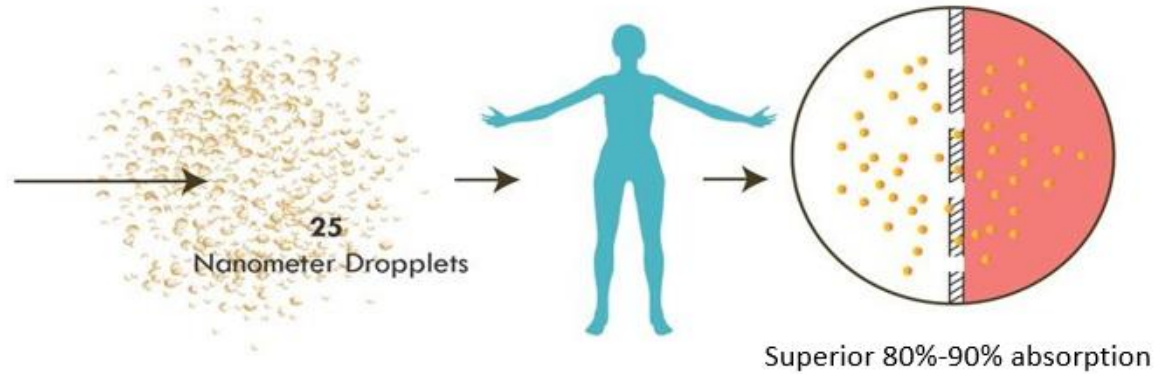
MARKET CAP

\$6.8 Billion

Competitive Advantages | Science Behind the Products

Mentanine[®] Rx & Mentab inol[®] Rx

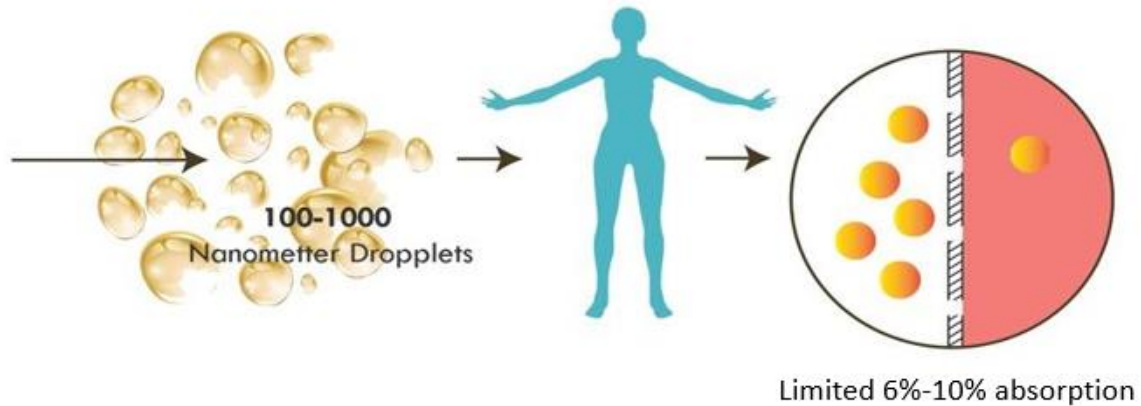
(nano emulsified)
Delivered sublingually



Bypassing digestive system

Other CBD & THC

(non nano emulsified)
Delivered orally

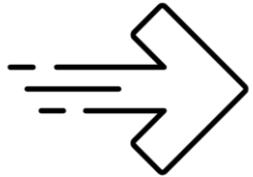


Damaging digestive system

Steps To FDA Approval | Similar To Process With Health Canada



Completed Pre-clinical Trials & Patented Master Formulations



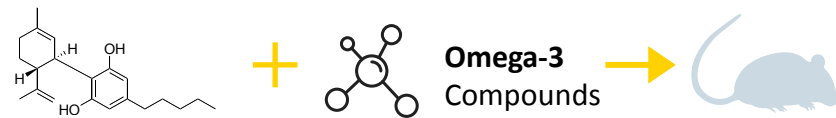
Agreement in place with BioPharma Global, engagement as consultants to initiate US-FDA, DIN application - expected shortly after completion of financing



Seek Orphan Drug status, rare diseases (Dravet Syndrome, Lennox-Gastaut Syndrome and Tuberous Sclerosis Complex < 200,000 people suffering in the US from the condition), allowing for expedited regulatory process – 45-52 weeks

ADC BioMedical Corp | Licensed Under Cannabis Act

Mentanine® Sublingually applied with a spray bottle
(Omega-3 + CBD)



RESULTS
20mg of Mentanine® = 200mg any other CBD product
10x activation Compared to other leading CBD formulations

	Mentanine®	Control
EFFICACY	90%	5–10%
DELIVERY TIME	15min	4–6hr

❖ **REDUCED**

- ❖ Anxiety effects
- ❖ Addictive effects
- ❖ PTSD effects
- ❖ Inflammation (helps with pain)



Mentabinol® Sublingually delivered powder
(THC + L-Theanine)



RESULTS
1mg of Mentabinol® = 10mg of non-emulsified THC
10x efficient Compared to other leading THC formulations

	Mentabinol®	Control
EFFICACY	90%	5–10%
DELIVERY TIME	15min	4–6hr

❖ **BLOCKED / RESOLVED**

- ❖ Memory impairment
- ❖ Hyperactive activity
- ❖ Gene vulnerability
- ❖ Depression-like symptoms



Mentanine® | Is Not The CBD Oil Currently Sold In The Market

Mentanine®

(Omega-3 + CBD)



Crosses Blood Brain Barrier - Fast

RESULTS
20mg of Mentanine® =
 200mg any other CBD product

10× More effective¹
 Compared to any leading CBD oil

REDUCED...

- ✓ Anxiety effects
- ✓ Addictive effects
- ✓ PTSD effects
- ✓ Inflammation (helps with pain)



	Mentanine®	CBD oil
EFFICACY	90%	5–10%
DELIVERY TIME	15min	4–6hr

1 – Data from pre-clinical trials

CBD + carrier oil

(coconut, grapeseed, sesame...)



Stops At CB-2 Receptor

RESULTS
200mg of CBD intake =
 20mg of CBD enters blood stream

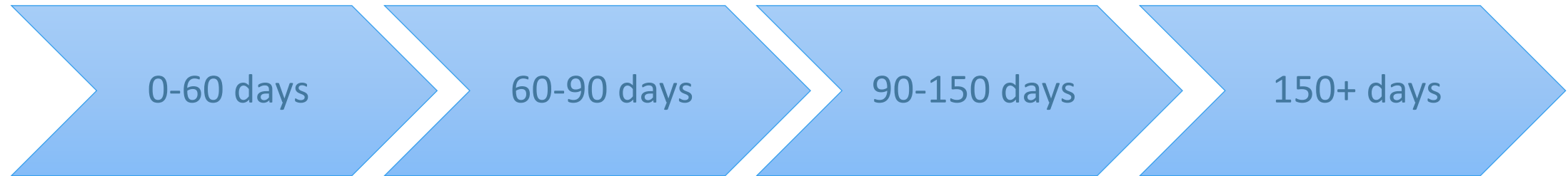
10 × Less effective
 Compared to Mentanine®

Does Not have effect on Mental Health symptoms:

- No effect on Anxiety,
- No effect on Depression,
- No effect on PTSD



Roadmap 2021 | Near-Term Strategy After Completion Of Financing



Mentanine®

- E-commerce store launch (under Canada, Cannabis Act & USA, 2018 Farm Bill)
- Engage BioPharma Global, US Consulting Firm, to initiate US-FDA, DIN application
- Establish regulatory program with US-FDA and Health Canada
- Initiate University of Guelph R & D Program

Mentanine®

- Establish Clinical Trials for Epilepsy – Internationally Recognized
- Establish Pilot Study for Anxiety
- US Distribution – Oak Haven Entities (Pharmacies, Dispensaries, Clinics.....) BrandVault360 (US Wholesalers, Branding)

Mentanine®

- Canadian Distribution
- e-commerce, Licensed Processors, Clinics & distribution channels
- Launch in USA

Mentabinol®

- Launch in Canada

Mentanine®

- Increase distribution network for US & Canada
- Export to Europe
- Set up production outside Canada & USA

Milestones | And Associated Costs Of Reaching Them

- List on Canadian Stock Exchange (legal & audit)
- Revenue from e-commerce site (Canada)
- BioPharma Global – FDA Fast Track Engagement
- Ontario Brain Institute – Clinical Trials

Q1 (\$2.4M)

- FDA submission for Mentanine Rx (orphan drug status, 505(b)(2) regulatory pathway, breakthrough therapy designation)
- CanaQuest Animal Health – Veterinary Division in partnership with University of Guelph¹ (continued from Q1)

Q3 (\$1.0M)

- Worldwide revenue from Mentanine Rx, Mentabinol Rx, Cannabis products
- List on NASDAQ

Target 2023



Q2 (\$1.0M)

- Revenue in Canada (under Cannabis Act)
- Health Canada submission
- Alzheimer’s pre-clinical trials at Western University (Dr. Laviollete’s R&D program)

Q4 (\$1.0M)

- Human trials for Mentanine Rx
- FDA – submission for Mentabinol Rx
- EMA – submission for Mentanine Rx

1 – Fifth best University in the world for veterinary science, QS World University Rankings, 2020

Mental Health Costs

Significant Mental Health Ailments to be Addressed



\$16 Trillion Mental Illness Will Cost the World \$16 USD Trillion by 2030¹

\$225 Billion Mental Health Costs in the US reached \$225 USD Billion in 2019 - 5.5% of all health spending²

\$50 Billion Mental Illness in Canada is at least \$50 Billion per year and growing substantially³

\$51.5 Million 20.6% of U.S. adults experienced mental illness in 2019 (51.5 million people).
This represents 1 in 5 adults⁴

1. Psychiatric Times, November 2018

2. Open Minds, May 13, 2020

3. Mental Health Commission of Canada

4. National Alliance on Mental Illness (NAMI)



CBD Oil Market Size

Significant Potential For Revenue In CBD & Mental Health Markets

\$9.7 Billion

Global CCBD Oil Market Size (2019)

CAGR: 25.6% from 2020 – 2027¹

\$6.4 Billion

North America Cannabidiol Market Size (2019)

CAGR: 27.7% from 2020 – 2027²

Drivers:

- Medical and Wellness Purposes
- Favorable Government Regulations
- Growing Awareness and Adoption for Various Health Conditions

1. Grand View Research, August 2020

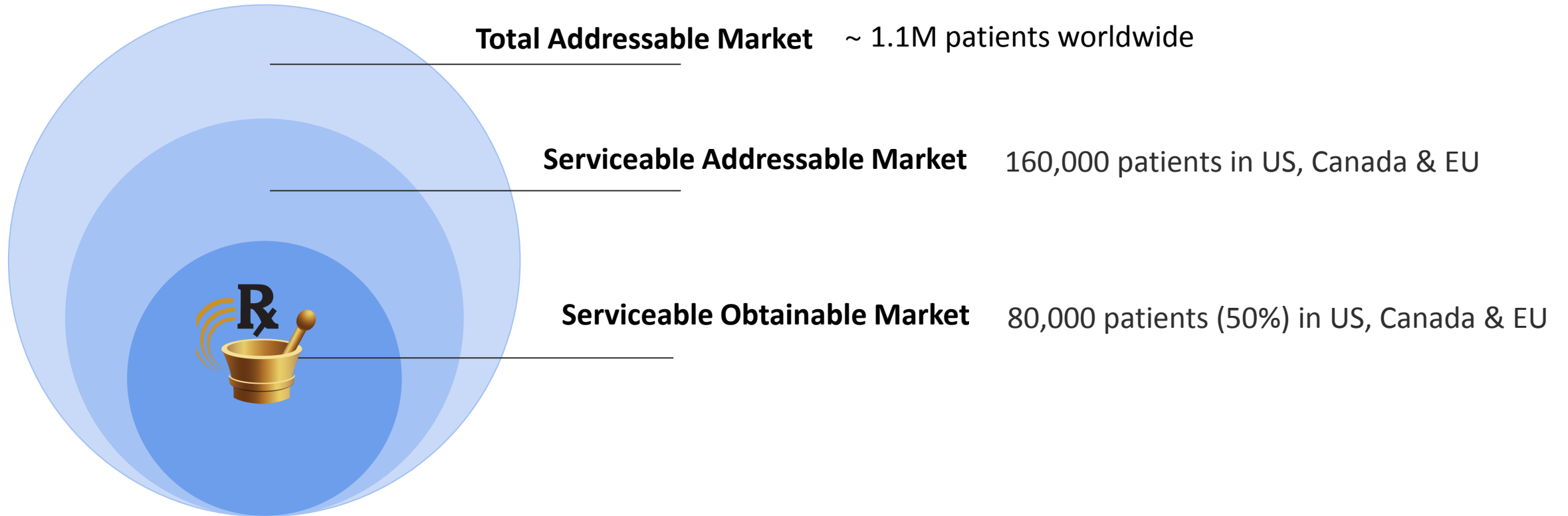
2. Grand View Research, November 2020

3. World Health Organization, June 2019



Pharmaceutical Regulatory Pathway To Market

| Patients Suffering from Epilepsy – Dravet & Lennox Gastaut Syndrome, and Tuberous Sclerosis Complex



Note: 1 – For illustrative purposes

MARKET CAPITALIZATION - COMPARABLE COMPANIES

						Share Price	Shares	Market
	Company Name	Pre-Revenue	Profitable	Symbol	Market	02-April-21	Outstanding	Capitalization
1.)	GW Pharmaceuticals, PLC	No	No	GWPH	NASDAQ	\$ 217.26	31,266,348	\$ 6,792,926,694
2.)	Charlotte's Web Holdings Inc	No	No	CWBHF	OTCQX	\$ 4.53	108,966,634	\$ 493,618,852
3.)	Revive Therapeutics Ltd.	Yes	No	RVVTF	OTC - Pink	\$ 0.39	317,058,751	\$ 122,543,207
4.)	Cardiol Therapeutics Inc.	Yes	No	CRTPF	OTCQX	\$ 3.51	36,588,116	\$ 128,424,287
5.)	Tetra Bio-Pharma Inc.	Yes	No	TBPMF	OTCQB	\$ 0.16	360,601,929	\$ 57,660,248
6.)	InMed Pharmaceuticals Inc.	Yes	No	INM	NASDAQ	\$ 3.41	8,050,707	\$ 27,452,911

1 - GW Pharma securities are American Depositary Shares (ADS) with each representing 12 ordinary shares; therefore 31,266,348 ADS shares represent 375,196,172 ordinary shares with the price on April 2, 2021 being \$18.11 for each ordinary share.

Note – all dollar amounts are expressed in US \$'s.

Scientific Partners & Regulatory Advisors Team



Dr. Steven Laviolette, B.Sc., Ph.D., a Professor and Neuroscientist in the Schulich School of Medicine & Dentistry at **Western University**, Addiction Research Group Dept. of Anatomy & Cell Biology, Dept. of Psychiatry R & D Program - 14 scientists

http://www.schulich.uwo.ca/anatomy/people/bios/faculty/laviolette_steve.html

For a short video on the research, visit https://www.youtube.com/watch?v=O_D4wkHHbDg

The investigator leading the research is Dr. Steven Laviolette, a Professor and Neuroscientist in the Schulich School of Medicine & Dentistry at Western University in London, Ontario. Dr. Laviolette is a leader in the study of cannabinoids in mental health and was recently awarded “Faculty Scholar” status at Western University. Dr. Laviolette’s research team has previously made numerous fundamental discoveries related to how cannabinoids impact and may serve as treatments for mental health disorders including schizophrenia, depression, post-traumatic stress disorder and anxiety. Dr. Laviolette’s primary research focus is in characterizing how specific phytochemical derivatives of cannabis may interact with specific brain pathways and molecular mechanisms whereby they may improve symptoms associated with various mental health disorders. Research from Dr. Laviolette’s team has been published in the top tier of neuroscience and psychiatry journals in the world. The following is a link to Dr. Laviolette’s profile on the Western University website.



Dr. Tom Ng, B.S., Ph.D., COO, BioPharma Global, Regulatory Consultants - 7 Leadership Team Members

<https://www.biopharmaglobal.com/about-us/>

Dr. Ng’s academic background includes a B.S. in Biochemistry from the University of Maryland and a Ph.D. in Molecular Biology from Johns Hopkins University. He is also an Executive Board Member and President Emeritus of the CMNS Alumni Association Chapter at the University of Maryland.

BioPharma Global is a full-service regulatory affairs consulting firm specializing in orphan products to treat rare diseases and non-orphan products to treat indications with unmet medical needs. Services include orphan drug designations, other expedited review programs, support for meetings with the FDA and EMA, IND filings, and comprehensive consulting on projects for regulatory strategy. The team is comprised of globally recognized experts in rare diseases and other under-served disease areas, including former FDA staff and a variety of scientists with many successful FDA interactions, orphan drug designations and other expedited program submissions to their credit.



Scientific Partners (continued) | R & D Partnership Program – Pets (Dogs, Cats)



Dr. David W.L. Ma, Ph.D. Professor, Department of Human Health and Nutritional Sciences, **University of Guelph** [R & D Program - 5 scientists](#)

<https://www.uoguelph.ca/hhns/people/dr-david-wl-ma>

Dr. Ma obtained his PhD in Medical Sciences in 2001 at the [University of Alberta](#) conducting research on the role of dairy fat and breast cancer. He pursued postdoctoral training examining the linkage between diet and cancer at [Texas A&M University](#) studying the role of omega-3 fatty acids and folate in colon cancer. In 2004, he took up a faculty position in the Department of Nutritional Sciences at the [University of Toronto](#) as an Assistant Professor. Later, in 2007 he joined the faculty in the Department of Human Health and Nutritional Sciences at the [University of Guelph](#) where he is currently a full Professor and Director of the Guelph Family Health Study. His present research program spans experimental and human studies investigating the role of diet and lifestyle in human health with a focus on health promotion and disease prevention. To date, Dr. Ma has authored over 130 peer reviewed publications.



Dr. Adronie Verbrugghe, Ph.D., Associate Professor, Veterinary College, **University of Guelph**

<https://ovc.uoguelph.ca/clinical-studies/faculty/Adronie-Verbrugghe>

Dr. Verbrugghe graduated as a companion animal veterinarian (DVM) from [Ghent University, Belgium](#) in 2005. She completed her PhD focusing with nutritional modulation of carbohydrate metabolism in cats in 2009 and stayed at the same university for 2 additional years as a postdoctoral fellow. She became board certified for the [European College of Veterinary and Comparative Nutrition](#) in 2010. In 2011, Dr. Verbrugghe joined the Ontario Veterinary College (OVC), [University of Guelph](#), as Royal Canin Veterinary Diets Endowed Chair in Canine and Feline Clinical Nutrition. To date, Dr. Verbrugghe has authored 35 peer-reviewed publications.

- Developed R & D Partnership Program (Pets - Dogs, Cats) – [leveraging from Western University, Dr. Steven Laviolette’s science and pre-clinical trial results](#)
- Established expertise in nutrition, food science, cannabinoid biology and veterinary medicine
- Secured approval and [matching funding](#) from MITACS, a Government of Canada, Academia-Industry research and training program
- Commencement upon CanaQuest, as industry partner, securing funding.



Management & Patient Acquisition Team | 100+ Years of Management & Product Development Experience



Richard Rusiniak, Mechanical Engineer, CEO, Director

Over 35 years of management, design and process experience. Co-founder and former President, CFO, and CTO of Cymat Corp (TSX: CYM) with a market valuation over \$150 million upon his resignation in 2002. Negotiated an Aluminum Foam Manufacturing license with Alcan International Ltd., and successfully commercialized the technology. Prepared full documentation and completed a \$10 Million technology development program with Industry Canada (TPC). Participated in the completion of \$25 million in financing with financial institutions. From 1978 to 1988, he was project manager with Long Manufacturing, as well as The Ontario Research Foundation (Ortech). Projects on which he has consulted include NASA's Zero Gravity Program, Atomic Energy of Canada's Re-tubing Program and Hawker Siddeley's Bi-Level GO Train Modularization.



Paul Ramsay, BBA, President, Chairman

Over 30 years of business development and management experience. Co-founder and former CEO and VP Business Development of Cymat Corp, (TSX: CYM) with a market valuation over \$150 million upon his resignation in 2002. Was instrumental in securing the Stabilized Aluminum Foam (SAF) license from Alcan International Ltd. Successfully negotiated a \$10 Million technology development program with Industry Canada (TPC). Participated in the completion of \$25 million in financing with financial institutions. Mr. Ramsay also introduced and sold several newly developed products to major corporations.



Ross Eastley, CA, CFO, Director

Over 35 years of accounting and CFO experience in both private and public sector organizations. Former CEO for the Canadian Society of Immigration Consultants (CSIC) from 2006 – 2009. Mr. Eastley reported to a nine-member Board, responsible for strategic planning, corporate communications, initial regulatory functions, creation of the staffing structure and management of legal processes. Former V P/Controller for Brandon University.

PATIENT ACQUISITION ADVISORY TEAM MEMBERS

Remi A Menes, BSc, MBA, Chairman, Advisory Committees – Vice-President, Specialty Patient Programs, McKesson Canada. Extensive commercial, operations and business development experience in the Biopharmaceutical, Biotech, Pharmaceutical, Medical Cannabis and the Hemp-derived CBD sectors.

Cheri Shaefer, MLA graduate, CCNT certified, Clinical Physician, Patient Acquisition & Education, Canada, Advisor, - Clinical Manager, MediKush, Patient Educator. Over 15 years in the medical field. Medical Licensing, Veteran's Affairs and one to one patient care.





Thank you

Contact Information:

Paul Ramsay, President

416.704.3040

paul@canaquest.com

www.canaquest.com